

# SPECIFICATIONS

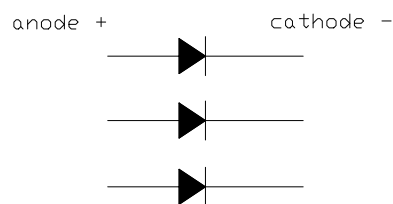
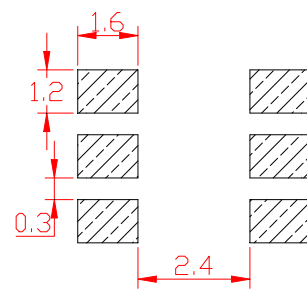
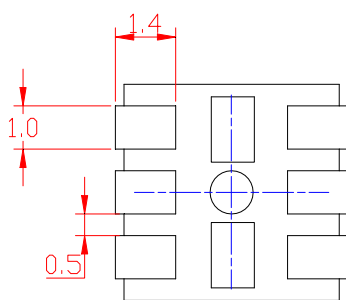
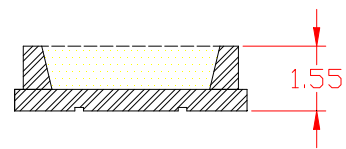
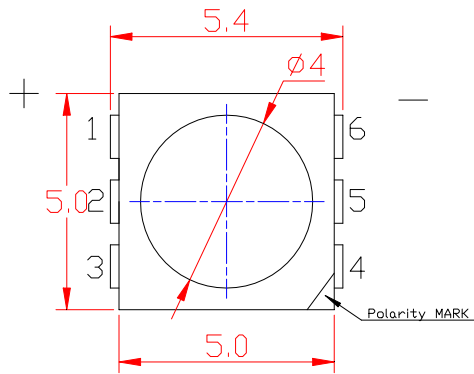
			5050
			TC5050WVD22- 3CZXR3



Version No			



- 
- 
- 
- 



1. A  
T

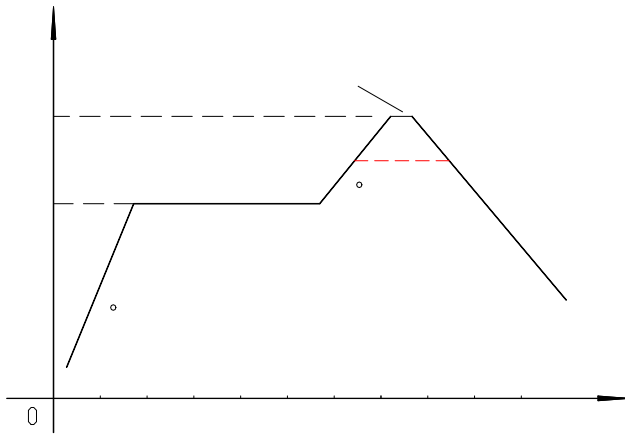
$\pm 0.2$

P		S	V		U
P	D	P	200		
F	C	IF	60		A
P	F	IFP	100		A
R	V	VR	5		V
E	D	ESD	2000(HBM)		V
O	T	T	-40	+85	
S	T	T	-40	+100	

I	S	M	T	M	U	C	
F	VF	2.8		3.2	V	IF=60 A	
R	IR	--	--	5	A	VR = 5V	
C	TC	2600	--	2800	K	IF=60 A	
		2800	--	3200			
		3800	--	4200			
		4800		5200			
		6000	--	6500			
C	R	R	80	--	85	/	IF=60 A
V ( )	2 1/2		120		D	IF=60 A	
L		22	--	24	L	IF=60 A	
C	SDCM	--		4		IF=60 A	

(T :I 10%, 2 ,V 0.05V) I 10%, 2 ,V 0.05V





1. R

2

2.

LED  
LED



1.

300

3

300

3

2. T



1. C

260

260

5

5

LED

2. T

LED

3. T -



T

LED

.T

LED

LED . P

. T

. S

LED

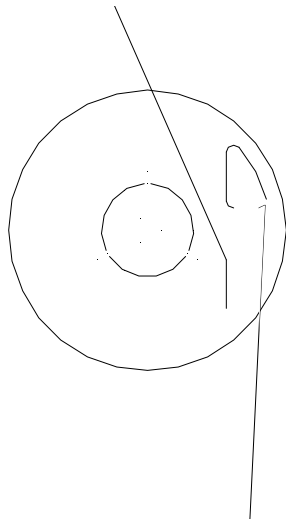
LED

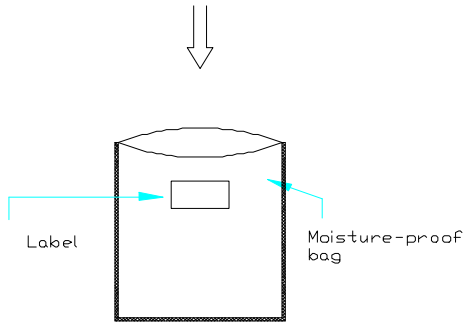
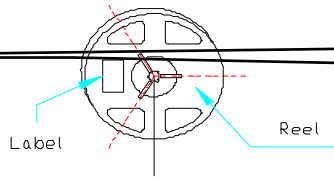
LED

P	L	C	L	R <sup>C</sup>	C
TC5050 6D22-3C R3	A 607	6000-6500K	22-24LM	80	
TC5050 5D22-3C R3	A 507	4800-5200K	22-24LM	80	4
TC5050 4D22-3C R3	A 407	3800-4200K	22-24LM	80	4
TC5050 3D22-3C R3	A 307	2800-3200K	22-24LM	80	4
TC5050 2D22-3C R3	A 207	2600-2800K	22-24LM	80	4

TEST ITEMS AND RESULTS

T I	R .S	T C	T	Q	A /R /
R	JESD22-B106	T =260 T=10	3	0/22	0/1
T C	JESD22-A104	-20 5 30 5 120 5 30	200	0/22	0/1
T S	JESD22-A106	-40 5 15 5 100 5 15	200	0/22	0/1
H T S	JESD22-A103	T =100 5	1000	0/22	0/1
L T S	JESD22-A119	T =-40 5	1000	0/22	0/1
P C	JESD22-A105	O 5 -40 >5 <5 O 5 100 >5	200	0/22	0/1
L T	JESD22-A108	T =25 5 I <sub>F</sub> =60 A	1000	0/22	0/1
H T H H L T	JESD22-A101	85 5 85%RH I <sub>F</sub> =60 A	1000	0/22	0/1





Vacuum

